

■ ■ wissner-  
■ ■ bosserhoff

Functional elegance in nursing care



## sentida

Universal low nursing beds





# Safety and comfort in perfection

sentida – universal low nursing beds

Falling is one of the greatest risks for the physical health and psychological well-being of elderly people. For this reason, systematic fall prevention is of crucial importance in care for the elderly, making it an important quality feature of a nursing home. The consequences of falls are often very serious for elderly people and, in the worst case, even irreversible. The fear of further falls is one of the most common psychological consequences, leading to limited physical activity, a loss of self-confidence and social isolation.

With the sentida range of low nursing beds, wissner-bosserhoff has achieved a consequent and above all uncompromising implementation of the requirements of modern nursing care: Maximum safety hand in hand with a cozy design.

Innovative solutions such as the 3-stop strategy and the patented SafeFree® side guard concept reduce falls as well as the consequences associated with them and set standards in terms of safety, mobility, height adjustability and coziness.

5

million  
falls of elderly  
people per year:

Almost one third of people aged 65 and above, as well as 50% of those aged 80 and above fall at least once a year.

In Germany alone, there are about 5 million cases of elderly people falling each year.

(Source: "Gesundheit und Krankheit im Alter" (= health and illness in old age).  
Publisher: Karin Böhm, Federal Statistical Office of Germany / Clemens Tesch-Römer, German Centre of Gerontology / Thomas Ziese, Robert Koch Institute, Berlin 2009)



Prevention  
with sentida  
low nursing beds

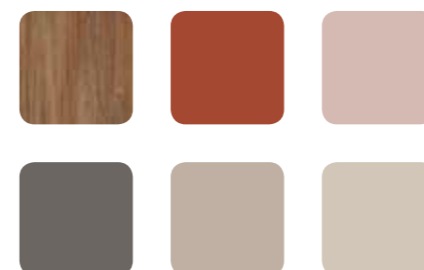
for use in institutions with high standards of universal care close to the ground: Nursing homes and homes for the elderly, care resorts, palliative wards, dementia and geriatric wards and rehabilitation institutions.



## Living concept Feathers

sentida | Design 010

Nature as an example for the choice of materials and colors. As harmoniously coordinated as a bird's plumage – this is how a comfortably furnished room was created which provides residents with security and protection. From the window seat you can hear the morning birdsong. This concept is just a suggestion – we will happily give you individual advice.



# sentida Portfolio

The entry model



The mobile one



The flexible one



The cozy one



The extra mobile one



Model

sentida 1

sentida 3

sentida 4

sentida 5

sentida 6

**NEW:**  
Now also available  
as dismantable  
version, see  
p. 23

Movability

In low position

At every bed height

At every bed height

At every bed height

At every bed height

Castors

Two fixed castors at the foot end  
Two 100 mm castors at the head end

Four 50 or 75 mm castors  
at the foot end double castors  
Two 100 or 160 mm castors  
at the head end fixed castors

50 or 75 mm double castors

50 mm double castors, completely covered  
by cozy undercarriage cladding

100, 125 or 150 mm easy-roll castors  
or 125 mm double or design castors

Braking capacity

Electric brake with handset

Electric braking with handset  
foot-end brake bar

Head-end and foot-end brake bar

One pedal brake for each axle  
with 2-castor central braking system

Foot-end brake bar with 4-castor  
central braking system

Safe working load

225 kg

225 kg

225 kg

270  
kg

270  
kg

Height adjustment

25-80 cm

25-80 cm

25-80 cm

27-80 cm

27-80 cm with 100 mm easy-roll castors  
29,5-82,5 cm with 125 mm easy-roll castors  
28-81 cm with 125 mm double or design castors  
32-85 cm with 150 mm easy-roll castors

Patient surface

87/100 x 200/210/220 cm

87/100 x 200/210/220 cm

87/100 x 200/210/220 cm

87/100 x 200/210/220 cm

87/100 x 200/210/220 cm (sentida 6 & 6-d\*)  
79 cm x 200 cm (sentida 6-s)  
79 cm x 190 cm (sentida 6-xs)





## Benefits at a glance

### Protection and mobility without FDM\*

SafeFree® – the patented side guard concept | 12 - 13

### **NEW:** Side guards – individual according to requirements

SafeFree® FLex | 14 - 15

### Safe nursing care, mobilization & sleep

3-stop strategy | 16

### Flexible & time-saving

3 bed lengths that can be adjusted without tools | 17

### Effective bedsore prevention

Patient surfaces – ergonomics & modularity | 18 - 19

### **NEW:** Improving and maintaining mobility

SafeLift | Revolutionary bed operation for residents | 20

### Intuitive operation

Clearly structured & ergonomic | 21

### Safety by day and night

SafeSense® – the intelligent bed exit sensor system | 22

### The one easy to disassemble

sentida 6-d | 23

### Energy efficiency & stability

Thanks to innovative drive concept | 26

### Designer reading light

soluna | 27

### We think ahead

memoriana | Room concept for dementia patients | 28 - 29

### Additional options

Design | Colors and decors | Features and accessories | 30



## Living concept Ocean

sentida | Design Ts10

A color combination like a day on the beach gives a feeling of peace and harmony. Intuitively we close our eyes, listen to the waves, enjoy the fresh sea air and a vacation feeling of well-being quickly sets in. You feel at ease in a room like this. This concept is just a suggestion – we will happily give you individual advice.



# Protection and mobility without FDM\*

SafeFree® the patented side guard concept

The SafeFree® divided side guard system is patented and voluntarily certified. The technology has been tested in practice more than 600,000 times. You can lower the space-saving side guards quickly in only 2 seconds and individually adjust them to four heights, depending on the care situation and size of the resident. Obtaining freedom instead of taking it away, in agreement with the Werdenfelser Weg (Werdenfelser care pathway)\*\*.

## 1 No protection needed



Lowered, the divided side guards look homely and provide unhindered access to the resident for daily routine nursing tasks. No need to take off and store accessories that are in the way, such as a middle post or fixed side guards.

## 2 Soft protection (no FDM\*)



For safety at night, it is often sufficient to combine the low position of the bed with the first height level of the head-end side guard. This avoids unnecessary barriers and effectively reduces the risk of falls on the long term. The resident can orient himself without being restricted.

## 3 3/4 protection (no FDM\*)



Creates a deliberate bed egress gap at the foot end to reduce freedom-depriving measures (FDM) while at the same time maintaining a high safety standard.

## 4 Full protection (FDM\*) for mattresses up to 18 cm



The highest position provides comprehensive protection of the resident. The distance between the two parts of the side guards is minimal, making them just as safe as a continuous side guard and exceeding the requirements of the standard IEC 60601-2-52. It is not necessary to stock up on accessories to close a central gap when using an abdominal belt for restraint.



If you use a thicker mattress, you can raise the side guards by an additional 6 cm.

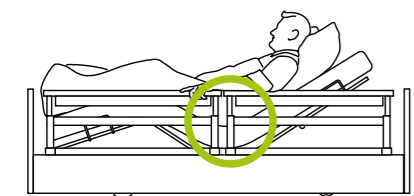
Learn more:



Videos on the side guard concept

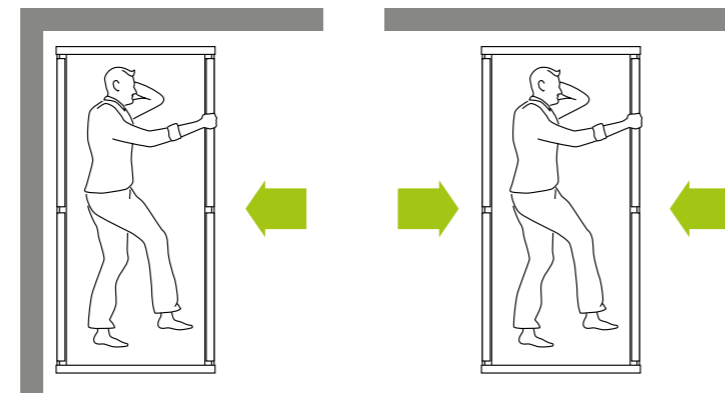


More safety due to smaller central gap\* < 60 mm



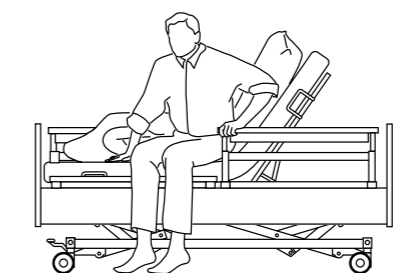
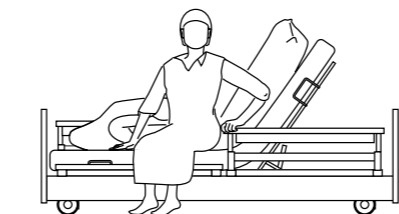
- Targeted compliance with the standard IEC 60601-2-52
- Safety in working position, i.e. also with raised backrest or leg rest
- Safety without using an additional central gap protector as accessory for restraint with an abdominal belt in accordance with the BfArM\*\* (German Federal Institute for Drugs and Medical Devices)

All-round access for nursing tasks = with 4 divided side guards



- Flexible use of the bed for standard care, even in limited spaces
- Flexible access from both sides of the bed in case of increased need for care
- Flexible use of the bed for bed egress on the left or right side to mobilize the resident
- Avoiding follow-up costs for upgrading divided side guards

Safe mobilization regardless of body size



Divided side guards are very useful for effective mobilization, as they are easy to grab and clasp. They can be used as a safe standing-up aid and verifiably support the resident's mobility.

2 Automatic positions



Watching television, reading or eating breakfast in bed with automatic comfort seating



Bedsore prevention and keeping heels free with automatic positioning

# SafeFree® Flex

Side guards as individual as your needs

In addition to permanently mounted side elements, individual and future-oriented SafeFree® Flex offers as much freedom as possible and as much protection as necessary. At the same time SafeFree® Flex retains the homely design which distinguishes all wissner-bosserhoff nursing home beds.

0

No protection needed



Comfort bed, without side guards

1|2

Soft protection (no FDM\*)



Mobilization aid only the head end elements

3

¾ protection (no FDM\*)



Wall protection with foot-end exit

4

Full protection (FDM\*)  
for mattresses up to 18 cm



4 fully adjustable side guards

## Safe

Complete protection



Secure fastening of elements

Prevents an accidental loosening or removal of the side elements

Seamless safety



Gap closure between the side panel and the patient surface  
Protection against accidents through getting trapped or wedged

Maximum mobilization



Optimum length and individually adjustable height of the head-end side guard  
Perfect hip protection when sleeping as well as comfortable and ergonomic mobilization of the resident



## Free

Fewer FDM\*



Conscious "omission" of side guards

Investment security for the operator  
Legal certainty regarding FDM for the nursing staff

## Flex

More economic efficiency

Side elements can be adjusted without tools

Your budget can be used as flexibly as the side elements can be attached, because you only pay for the elements that your residents really need.

No technician needed

Quick modification for the changing resident situation – with gap closure without (1) and with a handrail (2) or fully adjustable side guards (3)



Benefit from a homely design with a continuous side panel, independent of the required mobilization or resident protection situation:





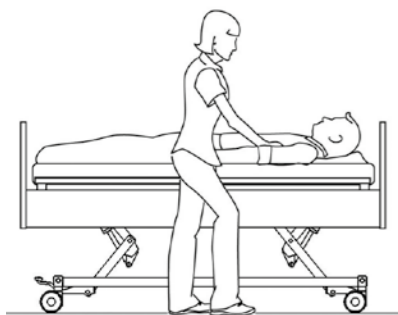
## Safe nursing care, mobilization and sleep

### 3-stop strategy

- Comfortable adjustment range from 27 to 80 cm
- First automatic stop at 41 cm at chair height for bed egress
- Collision protection when adjusting the bed from the low position and when using a bed extension

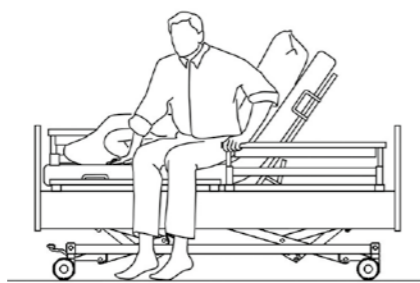
80 cm

Optimal nursing position



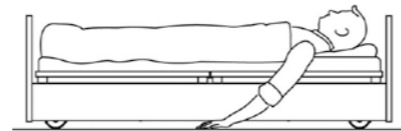
41 cm\*

Safe mobilization at chair height



27 cm\*

Fall prevention during sleeping phases



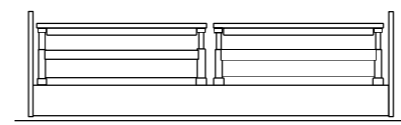
## Flexible and time-saving

### 3 bed lengths that can be adjusted without tools

- All standard wissner-bosserhoff nursing home beds are equipped with an integrated bed extension.
- Adjusted flexibly and without tools to different bed lengths.
- The requirements of the standard IEC 60601-2-52 are complied with in each configuration.

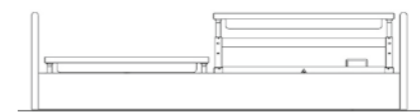
200 cm

Bed length of 200 cm:  
The divided side guards offer protection without a central gap > 318 mm\* and without a protector



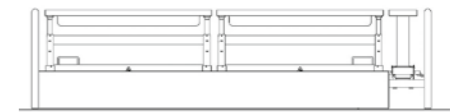
210 cm

Alternative bed length of 210 cm:  
Protection with longer side guards at the foot end without accessories and without a gap > 318 mm\*\*



220 cm

Bed extension to 220 cm:  
is temporarily adjustable with divided side guards for sentida - complete protection through foot-end protector (accessory) is guaranteed



# Effective bedsore prevention

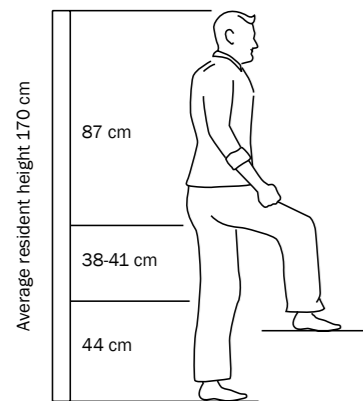
## Patient surfaces – ergonomics & modularity

The ergonomic division of the patient surface helps prevent pressure and therefore contributes to pressure ulcer reduction. The dimensions of the 4-part patient surface of wissner-bosserhoff nursing home beds are based on findings from anthropometrics, i.e. on the average size and height of a person.

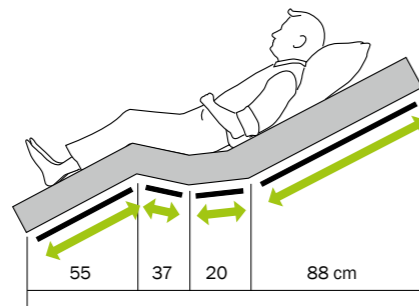
On the basis of professor Eigler's findings, it can be seen that the backrest area should be at least 80 cm long in order to effectively support the cervical spine.

An additional reduction of pressure can be reached with the BiNetic patient surface for patients with above-average height due to its

integrated bed extension. The patient surface can be extended to 220 cm either temporarily and without tools using the express bed extension, or permanently with the bed extension set, preventing the legs from bumping on the foot end.



Anthropometry according to Prof. Eigler \*



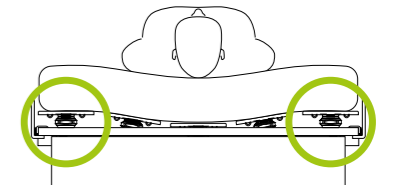
BiNetic patient surface 200 cm (long backrest)

## Patient surface modularity

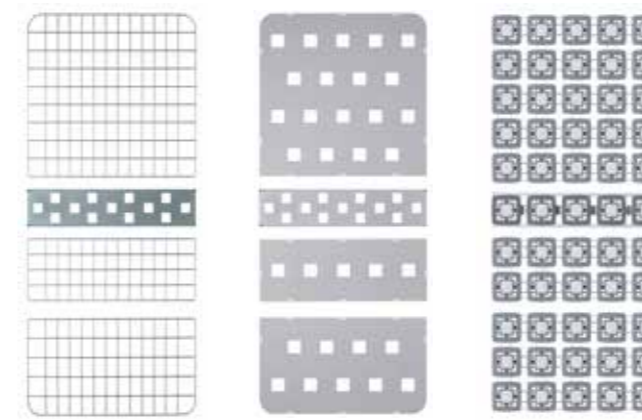
You can choose between 3 different patient surface options:

- 01 The wire mesh patient surface Aero ensures good aeration.
- 02 The synthetic mats of the Easyclean patient surface are especially easy to clean.
- 03 The comfort patient surface with its 55 spring elements not only promotes bedding comfort but also makes a valuable contribution to pressure ulcer prevention.

In general, the patient surface partitions can be easily removed and cleaned.



Comfort patient surface with 55 spring elements



01 02 03



Detail comfort patient surface

Up to  
**2.7**  
million people

in Germany have chronic wounds such as bedsores. Not least due to the demographic change, elderly people suffer from chronic wounds particularly often. The risk for people over 90 is at more than 11 %. Pressure ulcers are very unpleasant and straining for residents. Therapies usually take several weeks or months and may often cause further discomfort.

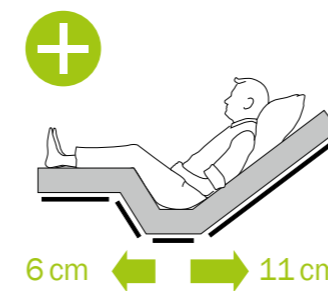
Source: BVMed 2012 study

## Effectiveness of double retraction confirmed\*\*

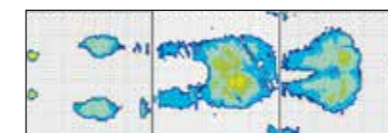
For years now, wissner-bosserhoff has been pursuing a practicable concept for reducing the risk of pressure ulcers: The double retraction as a component of the BiNetic patient surface. With the double retraction, not only the backrest but also the leg rest is located further apart from the seat section, so that

the surface is enlarged. Today, results from pressure measurements (thermal imaging) clearly show that there is less pressure with double retraction than with single retraction and significantly less pressure than with the standard patient surface.

## WIBO patient surface with notable relief

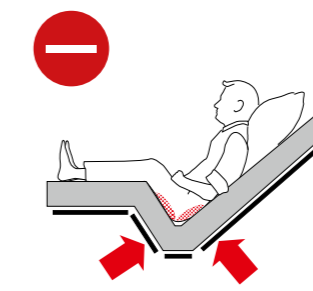


Double retraction = pressure ulcer prevention

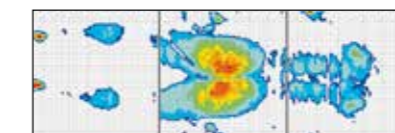


Thermal image of a BiNetic patient surface

## Standard patient surface without relief

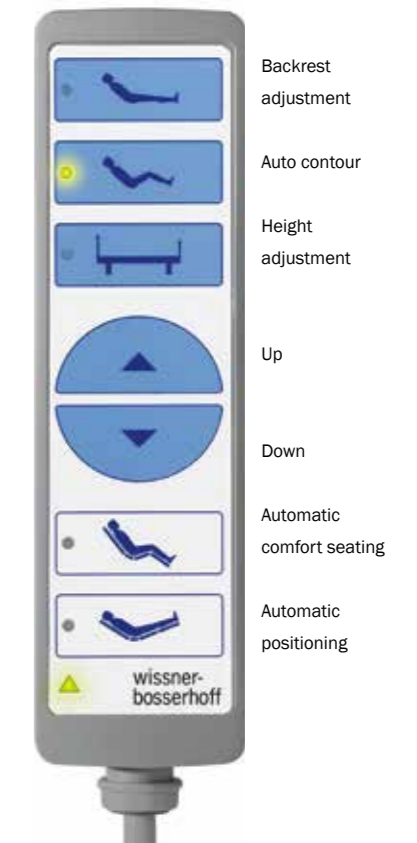


Single retraction = risk of pressure ulcer



Thermal image of a standard patient surface

↓  
Double retraction =  
**17cm**  
more space in bed



## Simple bed operation & safe mobilization

SafeLift | Product benefits at a glance



SafeLift offers the simplest operation so that residents can adjust their bed independently and set it to the best mobilization position for them. At the same time, they can support themselves when standing up on the SafeLift controller. This promotes residents' self-mobilization, reduces staff calls for bed adjustment and frees up care.

- Adjustment buttons for bed height and backrest
- Large buttons
- Firm position on a SafeFree® side guard
- GO button
- 360° rotation
- Ergonomic design
- Strong stability



## Intuitive operation

Clearly structured & ergonomic

Already at first glance, the handset of the sentida nursing home beds impresses with its clarity and ergonomic form: fewer buttons and large symbols ensure that operation can be learned intuitively. The pre-selection function makes the handset single fault safe – triggering a function by accidentally pressing a key is not possible.

### Extended functions

- Night light & reading lamp
- Separate leg rest adjustment
- Mobilization function
- Play protection



Video tutorial, also at:  
[www.wi-bo.com/de/Ueber-uns/Anleitungsvideos](http://www.wi-bo.com/de/Ueber-uns/Anleitungsvideos)

Key for safety levels (magnet-free)



## 3 safety levels



The locking function is integrated into the back of the handset, meaning that you do not have to look for a control box at the patient surface panel or bend down.

The three handset modes can be selected with a non-magnetic key:

**Care mode:**

All selection buttons are unlocked.

**Locking mode:**

All functions of the handset are locked.

**Resident mode:**

The resident can use the upper blue buttons.

# Safety by day and night

SafeSense® – the intelligent bed exit sensor system



wissner-bosserhoff, your reliable partner for the reduction of freedom-depriving measures (FDM): With SafeSense®, wissner-bosserhoff presents an intelligent assistance sensor system, which reliably helps reducing freedom-depriving measures day and night. It is equipped with an automatic night light, which is activated when the resident leaves the bed and is deactivated when the resident is back in bed again. SafeSense® is compatible with standard nurse call systems and can be retrofitted to wissner-bosserhoff nursing home beds manufactured in 2002 or later.



## Automatic night light

- Night light is automatically switched on when the resident leaves the bed
- Night light is switched off again as soon as the resident is back in bed

## Individual alarm system

- Freely adjustable immediate alarm from 0 seconds to 30 minutes
- Adaptation to the resident's mobility

## Integrated or available as retrofit kit\*

- Accessory option for current WIBO nursing home beds
- Retrofit kit for electrical WIBO nursing home beds manufactured in 2002 or later
- Available with cable or wireless



**More safety –  
less freedom-  
depriving measures  
(FDM)**

- Faster response time in the event of falls
- Greater safety during night and weekend shifts
- Fewer inspections
- Ideal in combination with sentida low nursing beds and SafeFree® side guards

# The one easy to disassemble

sentida 6-d

At first glance, the sentida 6-d cannot be distinguished from a standard sentida bed. The technical parameters of both beds also are identical. You can only see the difference once you take a closer look – the sentida 6-d can be completely disassembled and reassembled by one person – quickly and without tools. None of the individual components weighs more than 18 kg, complying with all occupational health and safety requirements.

The sentida 6-d is used in home care or nursing homes with narrow doors – without compromising design, quality or stability.



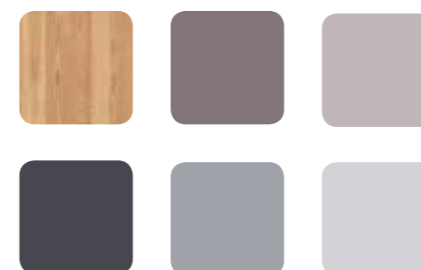
sentida 6-d dismantled  
No assembly weighs more than 18 kg.



## Living concept Lilac

sentida | Design 010

Timeless and classic – this choice of colors and materials gives the room a special atmosphere. The trend color of lilac is reminiscent of spring – everything is blossoming and fresh colors replace the winter gray. This concept is just a suggestion – we will happily give you individual advice.



# Energy efficiency and stability

Thanks to innovative drive concept

With the new motor, the sentida 5 and 6 nursing home beds are even more user-friendly, stable and energy-efficient. The integrated LED technology, energy-saving features and low-maintenance design are vital requirements for the cost-effective operation of a nursing home.



## Even more user-friendly

The new sentida 5 | 6 is equipped with an LED bedside light connection integrated in the motor. You only need one single cable from the bed to the power supply. The LED light can also be switched on and off using the handset. You can now also watch video tutorials on how to operate the bed by scanning the QR code on the bed.



Video tutorial, also at:  
[www.wi-bo.com/de/Ueberuns/Anleitungsvideos](http://www.wi-bo.com/de/Ueberuns/Anleitungsvideos)

## Stable and safe

The new motor is especially powerful. Its performance is especially impressive under high load. It has a safe working load of up to 270 kg (sentida 5 | 6) and is suitable for a maximum resident weight of up to 235/255 kg (depending on the accessories used).



## Economical and energy-efficient

With continuously increasing electricity prices, energy efficiency is an increasingly important factor. With an extremely low stand-by consumption of only 0.5 W, the new motor is especially economical. A clever cable management reduces wear and tear. The power cable can be exchanged separately, causing less storage costs.



The following calculation example demonstrates how the stand-by consumption of nursing home beds can influence the costs:

Product	Stand-by operation	Electricity costs over the course of 15 years*
The NEW sentida	0.5 W	€1,950
Bed A	3.76 W	€15,345
Bed B	2.5 W	€10,200
Bed C	1.7 W	€6,900

\*Example: Institution with 100 beds

# Designer reading light

soluna

The elegant shape of the partially translucent lampshade stands out as a special design element of soluna lights. Equipped with a swivel arm, you can precisely direct the light towards the object to be illuminated and it blends in harmoniously with the nursing home beds' ergonomics. Benefits of using LEDs: a long life, low energy consumption, no heat and absolutely safe operation.



## Advantages of LED

- Long service life
- Low energy consumption
- No heat build-up
- Absolutely safe operation



soluna with undulating lampshade



# We think ahead

memoriana | Room concept for dementia patients

Adequately taking care of people with dementia is a particular challenge for nursing staff and relatives. In cooperation with dementia experts from Great Britain and Germany, wissner-bosserhoff has developed a room concept especially for dementia patients. Specifically adapted to the needs of the patient, the new concept offers a considerable reduction in the strain on those providing care. The focus of the development includes three targets for the care of residents with dementia:



## Improving orientation

The resident is offered reference points for orientation in time and space, as well as colored orientation aids. The targeted integration of colors, forms and objects helps in terms of spatial orientation – worries and frustrations are reduced.



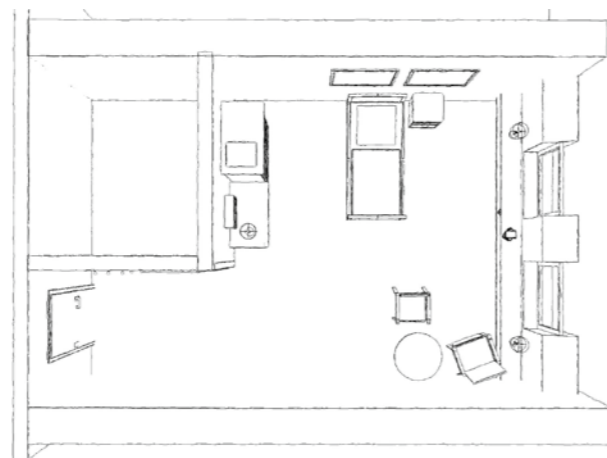
## Increasing independence

The more independently the resident can move in his surroundings, the less strain on the nursing staff. Functional furnishing elements such as handrails and open storage areas promote the dementia patients' mobility and independence. Other areas of the room are, however, only accessible to those providing care.



## Maximizing safety

Resident safety is of utmost importance. Low nursing beds with side guards, handrails on furniture and walls as well as visual orientation aids provide the person diagnosed with dementia a maximum level of safety without feeling restrained.



For more detailed information on the dementia room concept, have a look at the separate memoriana brochure or contact us by e-mail: [info@wi-bo.de](mailto:info@wi-bo.de)

# 100

different causes

Dementia can have up to 100 different causes. As complex as the causes and triggers of dementia is the course of the illness, which may differ from resident to resident.

Source: [www.bmg.bund.de](http://www.bmg.bund.de)  
German Federal Ministry for Health

Color combination memoriana



Corpus Lund Birch  
Lining Havana cherry



Corpus Havana cherry  
Lining cacao



Corpus Pinie Suomi Grey  
Lining Pinie Suomi Brown



# Colors | décors\*



Volcano White (U11502)



Lund Birch (R35018)



Lindberg Oak (R20021)



Cottage Pine (R55023)



Pinie Suomi Grey (R55022)



Pinie Suomi Brown (R55021)



Havana Cherry (R42006)



Shirling Oak (R38006)



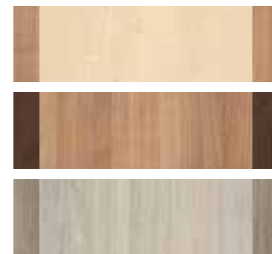
Beech Natural (R24015)



Beech (R24034)



Cherry (R42002)



3 color combination for the memoriana room concept\*\*

## Certified security

wissner-bosserhoff voluntarily has its production processes and management regularly audited by the TÜV. The company is certified in accordance with the regulations of the standard DIN EN ISO 9001:2008 for quality management systems as well as DIN EN ISO 13485:2003+AC:2007 for the manufacture of medical devices.



ISO 9001



ISO 13485



ISO 14001:2015



Certificate for side guards



Calibration certificate



CB certificate



Inspection label for product certification and auditing

\*Some décors available at extra charge.

# Synthetic leather & fabric covers

New combination options  
We will be happy to advise you!



With our new covers made from high-quality materials by renowned partners we offer an excellent surface material with the following **properties**:

- Resistant to moisture and dirt
- Breathable
- Water-repellent

- Blood and urine resistant
- Disinfectant resistant
- Extremely hard-wearing
- Environmentally friendly and non-toxic
- Durable
- Flame retardant (in accordance with the ignitability criteria in accordance with DIN EN 1021 Part 1 + 2 and BS 5852 Crib 5\*)

## Synthetic leather



Silver gray



Pearl



Birch



Pebble



Cashmere



Smoke



Cherry



Corn



Lime



Royal

## Fabrics



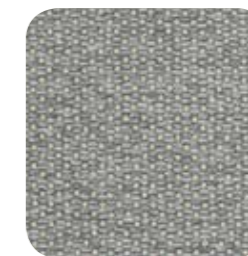
Green, floral (Aurora 6520)



Blue, striped (Agon 5520)



Gray, striped (Agon 8520)



Gray, polka dot (Flint 8520)



Meadow (Mailo 6520)



Sea (Mailo 5520)



Sand (Mailo 1521)



Stone (Mailo 8520)



Rose (Mailo 4520)

\* Flame retardancy depends on the foam material used. | Item numbers: 50-0818, fabric covers for head section Df | 50-0819, fabric covers for foot section Df



# Design | head / foot sections

## Head section



Design A  
Head-/Foot section



Design D



Design Df



Design G



Design K



Design O



Design T



Design Ts

## Foot section



Design Ak  
Head-/Foot section



Design D



Design Df



Design G



Design K



Design O



Design T



Design Ts

## Low foot section



Design Ak  
Folded down



Design Dx



Design Dfx



Design Gx



Design Kx



Design Ox



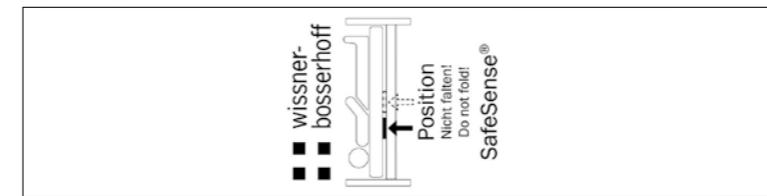
Design Tx



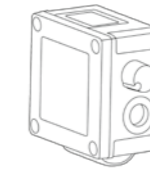
Design Tsx

# Accessories | SafeSense® & SafeLift

## SafeSense® sensor mat 2.1



02-000876  
SafeSense® sensor mat 2.1  
80 x 20 cm

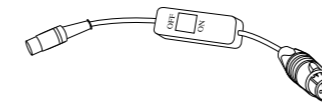


04-1851  
Digital bed exit box 2  
cable or wireless version

Also available as a set:

- Sensor mat 2.1 & bed exit box 2  
10-0871
- Cable version  
10-0872
- Wireless version

## SafeSense® connection kit



04-1508  
Adapter cable with on/off switch and suitable plug for connection to the nurse call system (customer-specific) for the cable and wireless version

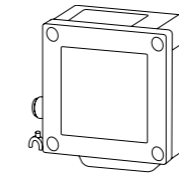


04-1608  
Adapter cable without on/off switch; with suitable plug for connection to the nurse call system (customer-specific) for the cable and wireless version

## SafeLift bed operation



10-0811  
SafeLift Controller

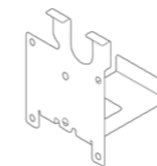


10-0808  
SafeLiftBox

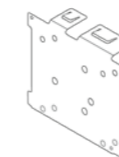
As a set:

10-0799  
SafeLift set

## Retaining plate SafeSense® and SafeLift



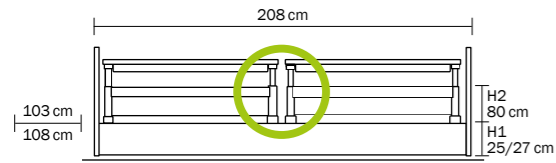
01-011193  
Retaining plate for DU09 motor



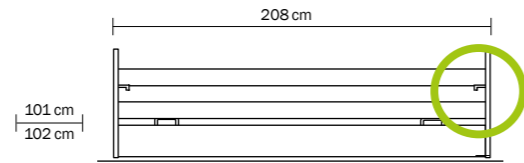
01-011194  
Retaining plate for Q7 motor

# Furnishings and accessories

## Dimensions

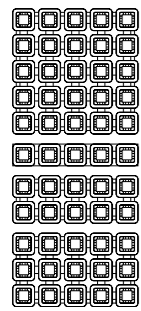


sentida with divided (10) side guards, without gap  
Outer dimensions: L = 208 cm, W = 103/108 cm  
Mattress dimensions: L = 200 cm, W = 87 cm  
H1 25/27 cm (low position), H2 80 cm (highest position)

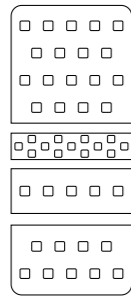


sentida with continuous 2-part  
09 side guard with trigger release

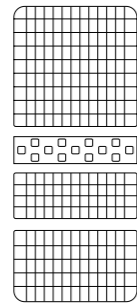
## Patient surfaces



Comfort

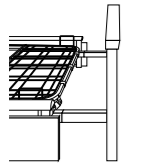


EasyClean

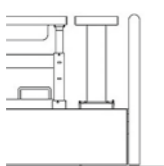


Standard | Aero

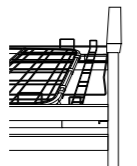
## Bed extensions



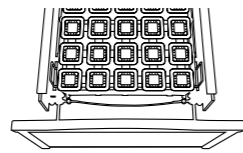
Temporary bed extension divided  
10 side guard (standard)



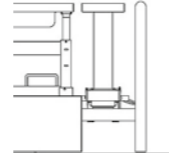
Permanent bed extension divided  
10 side guard (optional)



Permanent bed extension  
09 side guard (optional)

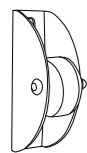


Bed extension with express release  
(optional)



10-0570/10-0580  
Protector for bed extension  
by 20 cm (optional)

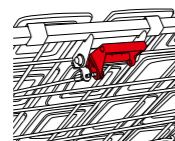
## Options



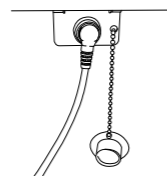
Vertical wall stopper castors



3D horizontal and vertical wall stopper castors



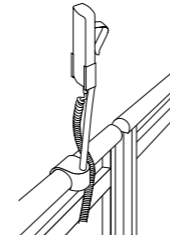
CPR release on the backrest



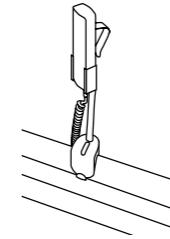
Plug & play use of the handset on one or both sides of the bed

01-010812, 01-010813  
Underbed light switchable (not shown)

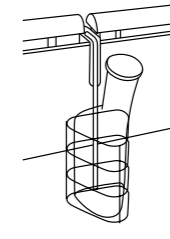
## Accessories



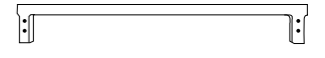
10-0419  
Handset holder for divided side guards  
10-0421  
Handset holder, short



10-0422  
Accessories and handset holder for continuous side guards  
10-0421  
Handset holder, short



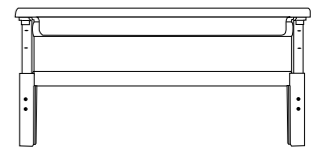
10-0424  
Accessories and handset holder for attachment to side panel  
50-0164 urine bag holder (no picture)



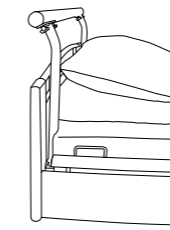
10-0817  
Gap closure base



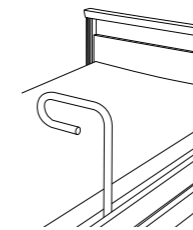
10-0818  
Gap closure design



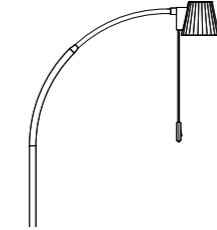
10-0819  
Side element Flex



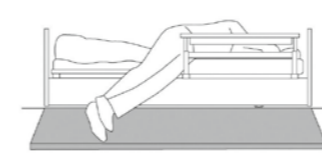
10-0534  
Transport handle EasyMove



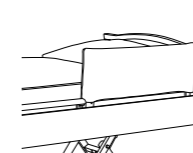
10-0715  
Standing-up aid for 09 side guards as well as 3/4 side guards



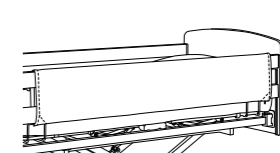
50-0773 Design soluna LED light with power supply unit  
50-0550 Design LED light soluna without power supply unit



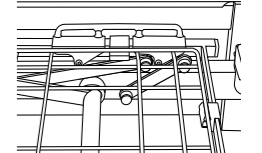
50-0206  
Fall mat width 90 x length 200 cm, height approx. 4.5 cm



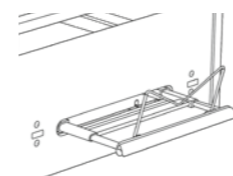
50-0174  
Cushioning for divided 10 side guards



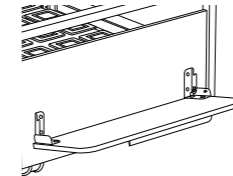
50-0338  
Cushioning for 09 two-part side guards



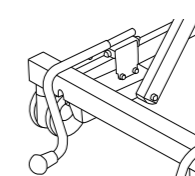
10-0563/10-0533/10-0521  
Segufix holder  
- for the thigh rest  
- for the backrest  
- for the seat section



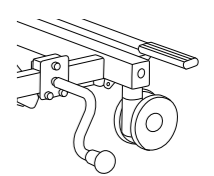
10-0617  
Integrated design linen holder  
Compatible with all beds (except 09 3-part side guards and A-kk design)



10-0719  
Linen holder, compatible with all bed types



Head-end wall spacer  
10-0707 short  
10-0709 long (not shown)



Side-mounted wall spacer  
10-0708 short  
10-0710 long (not shown)

---

Members of LINET Group

**wissner-bosserhoff GmbH**

Hauptstraße 4-6 | 58739 Wickede (Ruhr) | Germany

Phone: +49 2377.784-0 | Fax: -163 | [info@wi-bo.de](mailto:info@wi-bo.de) | [wi-bo.com](http://wi-bo.com)

